

KALLER[®]



*The Next
Generation!*



Roller Cam RC2, RCP2

by

 STRÖMSHOLMEN

Roller Cam RC2, RCP2

The next generation of KALLER Roller Cam has been developed to meet the industry's increasing demands on standard cam units.

This new generation offers:

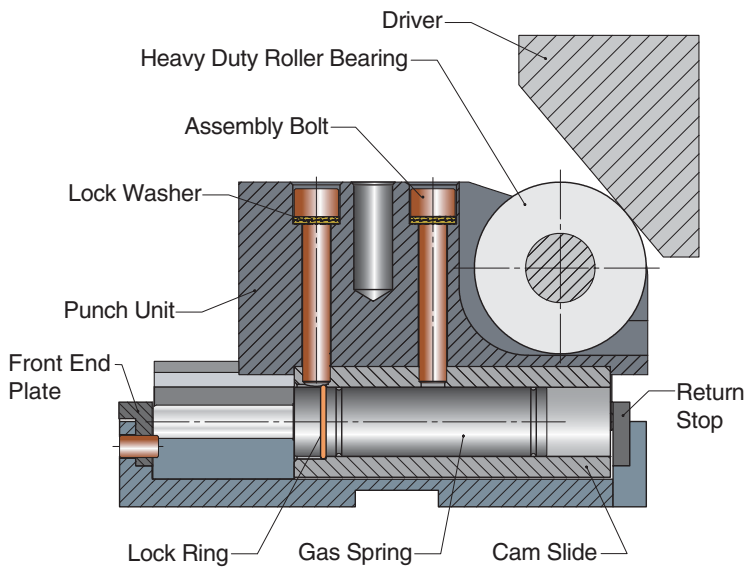
- High precision and maintenance free guiding allowing for more off center loading and upside-down installation,
- Long service life,
- Built in return stroke dampening,
- Easy punch attachment,

The KALLER Roller Cam is available for a maximum piercing force of 30 kN, 50 kN and 150 kN.

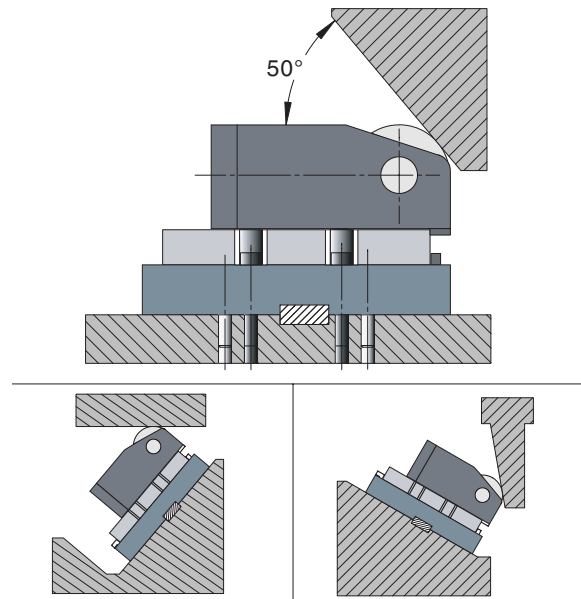
The driver itself is to be designed by the user to give the required displacement profile.

The contact surface on the driver should be hardened to approximately 58-60 HRC.

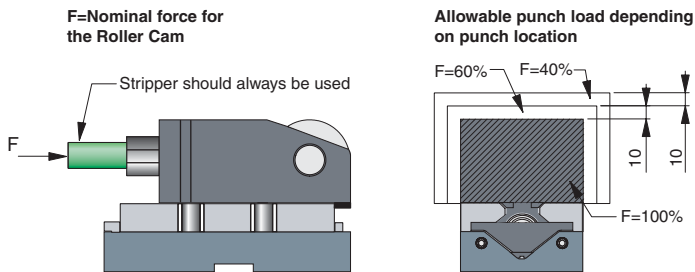
Design



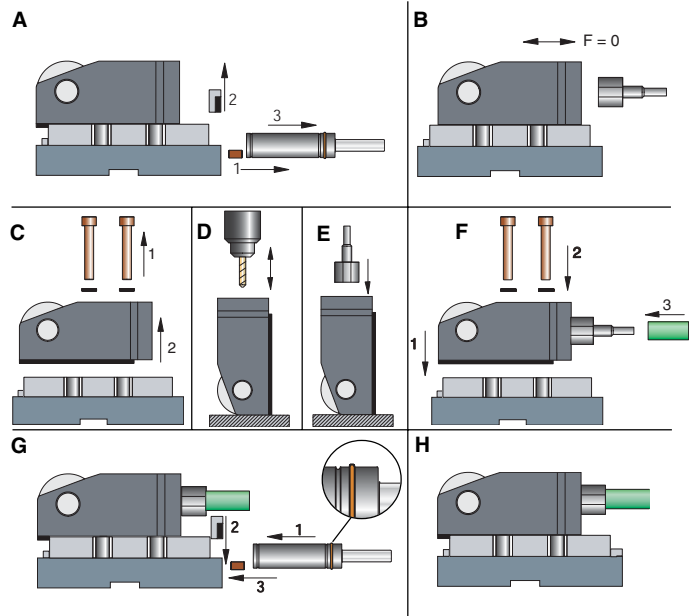
Mounting options



Punch location



Punch attachment

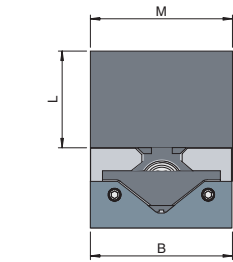


Basic Information

Recommended max strokes/min..... 40 spm (at 20°C)
 Max velocity.....0.8 m/s
 Max play at face of punch unit.....0.02 mm

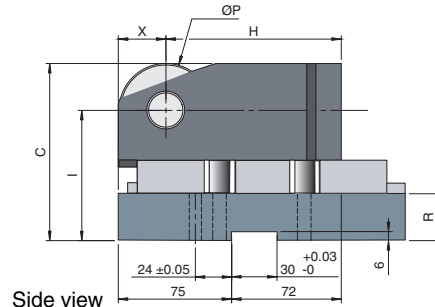
Dimensions RC2 30, RC2 50 & RCP2 150

RC2 30, RC2 50 & RCP2 150



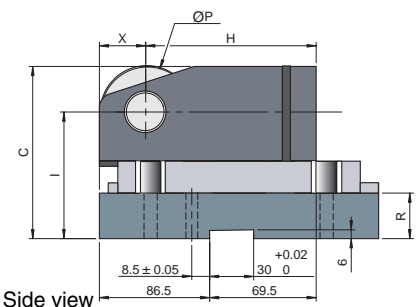
Front view

RC2 30 & 50

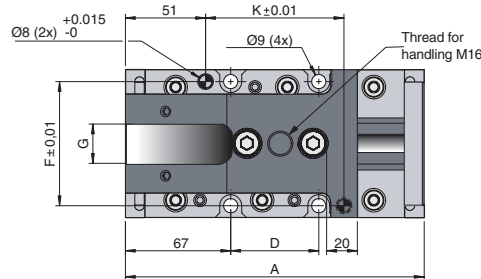


Side view

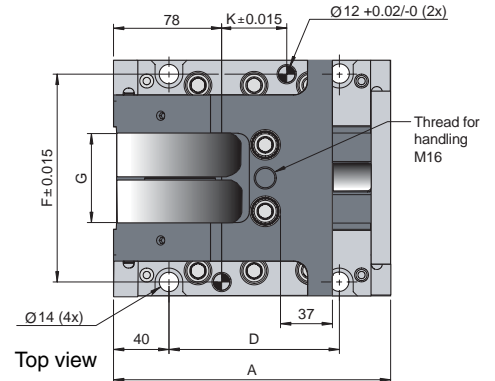
RCP2 150



Side view



Top view

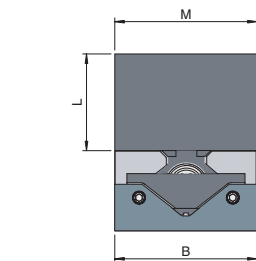


Top view

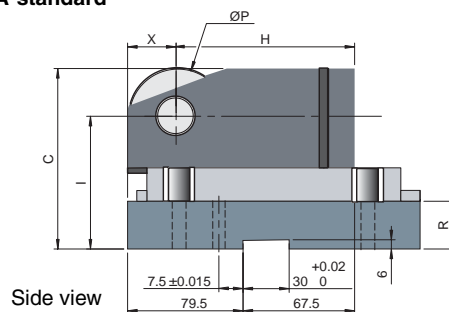
Order No.	S Stroke	A	B	C	D	F	G	H	I	K	L	M	P	R	X	Max width of the driver
Nominal force 3000 daN		Initial return force 200 daN						Gas spring M2 200								
RC2 30-050	50	190	94	117	56	79	25	116	86	88	64	94	62	31	31	36
RC2 30-080	80	220	94	117	86	79	25	116	86	118	64	94	62	31	31	36
Nominal force 5000 daN		Initial return force 350 daN						Gas spring X 350								
RC2 50-050	50	190	120	140	56	105	29	111	103	88	75	120	72	40	36	36
RC2 50-080	80	220	120	140	86	105	29	111	103	118	75	120	72	40	36	36
RC2 50-100	100	240	120	157	126	105	29	111	120	158	75	120	72	57	36	36
Nominal force 15000 daN		Initial return force 500 daN						Gas spring X 500								
RCP2 150-050	50	200	170	165	123	150	62	110	120	47	92	170	90	46	46	62
RCP2 150-080	80	230	170	165	153	150	62	110	120	77	92	170	90	46	46	62
RCP2 150-100	100	250	170	165	173	150	62	110	120	97	92	170	90	46	46	62

Dimensions RCP2 30, RCP2 50

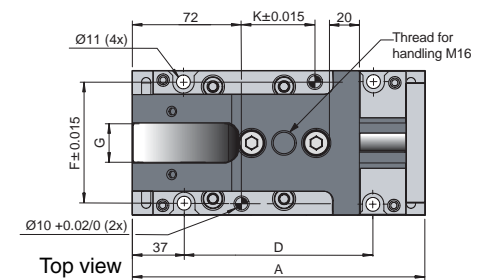
RCP2 30 & 50 Dimensions as per PSA standard



Front view



Side view



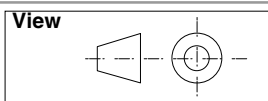
Top view

Order No.	S Stroke	A	B	C	D	F	G	H	I	K	L	M	P	R	X	Max width of the driver
Nominal force 3000 daN		Initial return force 200 daN						Gas spring M2 200								
RCP2 30-050	50	190	100	117	116	82	25	116	86	46	64	94	62	31	31	36
RCP2 30-080	80	220	100	117	146	82	25	116	86	76	64	94	62	31	31	36
Nominal force 5000 daN		Initial return force 350 daN						Gas spring X 350								
RCP2 50-050	50	190	120	140	116	102	29	111	103	46	75	120	72	40	36	36
RCP2 50-080	80	220	120	140	146	102	29	111	103	76	75	120	72	40	36	36
RCP2 50-100	100	240	120	140	166	102	29	111	103	96	75	120	72	40	36	36

Note! For 2D & 3D CAD downloads, see www.kaller.com

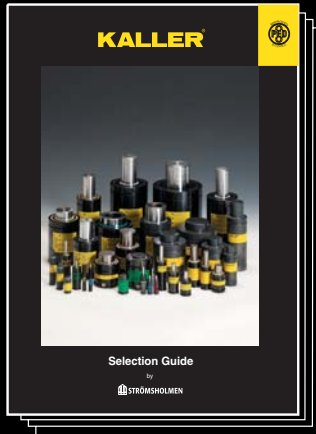
We reserve the right to add, delete or modify components without notification.

All dimensions are stated in mm.
All dimensions are nominal unless tolerance is stated.



KALLER®

The Safe Choice



Gas Springs

Kaller developed the first nitrogen gas spring for press tools and today offers a comprehensive selection of high quality gas springs for use in different tool & die applications.



Controllable Gas Springs-KF2

Kaller controllable springs are a family of gas springs, for use in press tools, that can be locked in their bottom position and where the return stroke of the spring can be controlled.



Flange Stripper Unit

Kaller Flange Stripper Unit is used in flanging dies for stripping/lifting a flanged part after forming. It provides 200 daN of stripping force, can be top or bottom mounted and is self guiding.



Flex Cam™

The Flex Cam is used for piercing, cutting, forming and flanging operations. The system allows for a flexible distribution of forces with optimal direction and velocity. By using a Flex Cam, fewer tools are required in production.



Roller Cam

Kaller Roller Cam is used for piercing, trimming, flanging and restriking. The Roller Cam can be mounted in both vertical and horizontal angles.



Counter Balance

Kaller Counter Balance gas springs can be used to lift, lower, assist, balance, and hold in a multitude of applications.

 **STRÖMSHOLMEN**
Strömsholmen AB

Box 216 • SE-573 23 Tranås • Sweden
Phone +46 140-571 00 • Fax +46 140-571 99
info@kaller.com • www.kaller.com

 **KALLER**
GAS SPRINGS

33280 Groesbeck Higway, Fraser,
MI 48026
Phone: +1 586 415 6677, Fax +1 586 415 6699